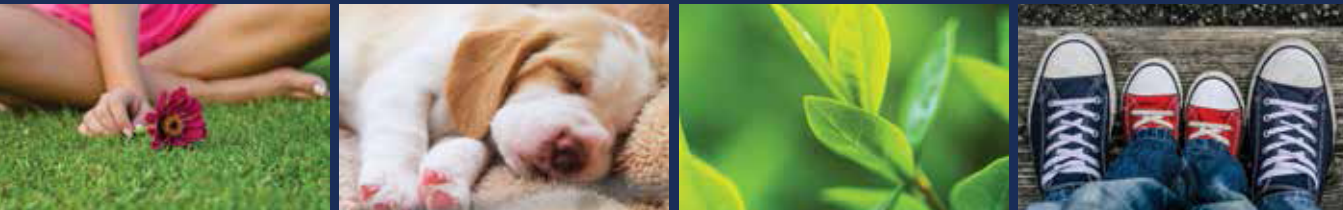




MADISON





## Remarkable Windows, Remarkable Story.

Synergy Windows has specialized in providing the highest quality energy-efficient windows and doors. Our top quality, professional grade windows and doors enhance every aspect of your home, including significantly lowering your overall energy bill and improving the curb appeal, while increasing the overall value of your home.

This makes choosing our windows and doors one of the best home improvement decisions you could ever make.

Our company is built on positive reviews and referrals which is how we continue to grow. Most businesses focus on traditional advertising methods which are not relationship driven, but product driven. Synergy Windows believes that focusing 100% on quality, integrity, customer service and going above and beyond for our customers will naturally separate us from our competitors.

The word "Synergy" is defined as the interaction or cooperation of two or more organizations, substances, or other agents to produce a combined effect greater than the sum of their separate effects. We achieve this "Synergy" bringing together high quality products and outstanding customer service.

It is not our intention to satisfy you or even please you. Our intention is to impress you by being relentless in keeping our word, having integrity, following through and leaving a positive imprint on your life.

We look forward to building that "Synergy" together with you.





MADISON

Your home is about to become even more exceptional. Classically styled and supremely durable, Madison Series Windows will dramatically enhance the appearance of your home while reducing your annual energy costs. Constructed with premium-grade extrusions, the extra thick sash and handsome frame combine eye-catching good looks with outstanding protection and year-round comfort.

MADISON DOUBLE-HUNG GLASS PERFORMANCE COMPARISON\*

	U-Factor	SHGC
Clear Glass	0.44	0.54
ClimaTech	0.29	0.29
ClimaTech ThermD	0.28	0.29
ClimaTech Elite	0.28	0.20
ClimaTech TG2	0.23	0.25

\*Whole window values double-strength glass.

# Madison Series

Premium Fusion-Welded Windows

1. PVC frame and sashes will never chip, peel, crack or warp. Made with premium materials, the color is formulated throughout so the beautiful luster lasts.
2. Multi-chambered sashes and mainframe create insulating air spaces for thermal efficiency.
3. Quad 4 weatherstripping at the header optimizes thermal protection and energy savings.
4. Insulated glass unit\* featuring triple-pane glass with optimal air space improves year-round performance. (Double-pane glass is standard)
5. Intercept® Warm-Edge Spacer System maximizes thermal efficiency and the life of the insulated glass unit.
6. Interlock at sash meeting rails creates a super-tight seal against air infiltration, providing added comfort.
7. Steel reinforcement in the meeting rails increases rigidity and strength.
8. Drop-in glazing provides energy efficiency as well as interior aesthetic appeal.
9. Compression bulb seal delivers added protection against inclement weather.
10. Sloped sill forces water to drain to the exterior of the window.
11. Hidden screen track for clean lines and added beauty.
12. Foam-enhanced mainframe and sashes for added insulation efficiency.

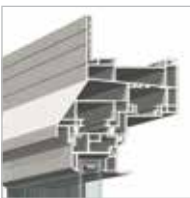
## Plus these additional features:

- Fusion-welded frame and sashes add strength and rigidity.
- Dual vent stops provide a limited opening of the window for ventilation.
- Full balance covers help protect against air infiltration while adding a finished look to the window frame.
- Constant force balance system ensures effortless operation of the sash.
- Both sashes tilt-in for easy cleaning of the window from inside your home.
- Triple-barrier weatherstripping between the jamb and sash helps block infiltration of air and water.
- Full or half fiberglass screens provide ventilation while keeping insects out.<sup>1</sup>

<sup>1</sup> Full screens are standard on exterior color-finished windows.



For enhanced appearance and ease of installation, a stucco fin option is also available.





# Double-Hung and Sliding Windows

The Most Popular Window Choice in American Architecture

Double-hung windows are the perfect window for traditional beauty and exceptional performance. The tilt-for-cleaning benefit makes them a favorite among homeowners. Designed with smooth site lines, sliding windows offer a functional style without sacrificing an aesthetic appeal. Sleek sashes slide horizontally for easy opening and closing while creating an unobstructed view of the outdoors and letting natural light shine through.

- Fusion-welded sash and mainframe structure for added strength and rigidity.
- Interlock at sash meeting rails creates a super-tight seal against air infiltration, providing added comfort.
- Sloped sill forces water to drain to the exterior of the window.
- Drop-in glazing provides energy efficiency as well as interior aesthetic appeal.
- Triple-barrier weatherstripping for superior protection from air and water infiltration. (Double-barrier on sliding window)
- Constant force balance system ensures effortless operation of the sash. (double-hung window)
- Sliding window sashes glide on a nylon-encased dual brass roller system for smooth operation.
- Hidden screen track for clean lines and added beauty.



# Casement and Awning Windows

A Big, Beautiful View with Maximum Airflow

Casements are perhaps the most versatile window style. Their uninterrupted sightlines ensure maximum viewing area, while their crank open/close operation provides ease-of-use and maximum energy efficiency. Great style comes to any interior design when awning windows and fixed-lites are combined. Your windows will reflect and enhance your home's beauty, and they're built to last a lifetime.

- Beveled exterior sash design creates the appearance of a larger glass area with an attractive slimline look.
- Step-down frame with three weatherstripping seals provides a tight seal during inclement weather.
- Heavy-duty, state-of-the-art hinge system provides easy operation from inside the home.
- Positive crank mechanism ensures easy operation when opening and closing the sash.
- A dual locking system on each side of the window. (awning window)
- Multi-point locking system ensures a tight seal and increased comfort.
- Multiple lite configurations available in a single mainframe.





# Bay and Bow Windows

Add the Perfect Touch of Warmth and Charm to Your Home

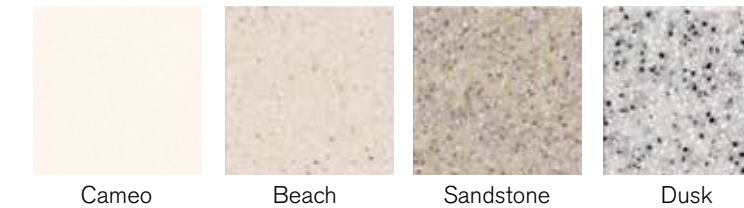
Nothing else can match the beauty and understated elegance of these very distinctive styles. Their smooth lines add a charming touch to your home, while expanding your outdoor view. They are also skillfully crafted to reduce energy loss and enhance your indoor comfort.



- 1-1/4" furniture-grade veneer is standard in the construction of head, seatboard and jambs.
- Head and seatboard are available in oak or birch veneer finishes and ready for painting or staining.†
- 3" pre-insulated seatboard option means a more comfortable home and helps increase energy savings.
- Slimline reinforced mullion design provides superior strength and support for the selected components.
- Exterior roof system available with optional copper or painted aluminum roof clad kits.

†It is imperative that your new bay or bow window is sealed and finished properly within the first 30 days after installation. Failure to properly finish and seal all of the wood components may cause the wood to fade, swell, warp, or develop other defects that would not be covered under your normal product warranty.

## Bay and Bow Avonite Seatboard Options



Cameo

Beach

Sandstone

Dusk



# Sliding Patio Doors

Visually Exciting and Powerfully Built

Whether you have a yard, deck or terrace, our sliding patio doors extend your room's ambiance, creating an open, expansive feeling. The expanded glass area provides added light and its reliable sliding convenience extends your enjoyment year-round.

- Three distinctive styles: Contemporary, Classic and French.
- Mainframe and sash feature a double-wall design and multi-chambered construction for added strength.
- Dual internal/external weatherstripping on the sash ensures optimal energy efficiency.
- Precision-engineered tandem roller system ensures easy and quiet door operation.
- Heavy-duty extruded aluminum screen features four adjustable rollers for smooth gliding.
- Available in 2-, 3- and 4-panel configurations.
- Choose from a variety of solid colors, hardware finishes and grid patterns to complement your Synergy Windows.



Classic



French



Contemporary

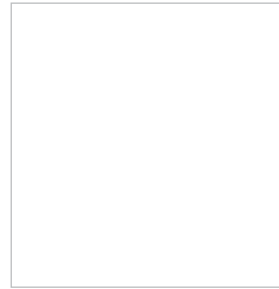
# Design Options

Exceptional Style for Every Home

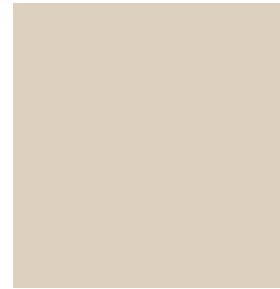
Create elegance with our beautifully styled decorative options. These iconic colors remain popular from generation to generation with their beautiful appearance and harmonious appeal.

## Color Collection

Beauty and vision, performance and strength – it all comes together in Madison's assortment of color selections. Customize the appearance of your windows with our beautifully styled decorative options.



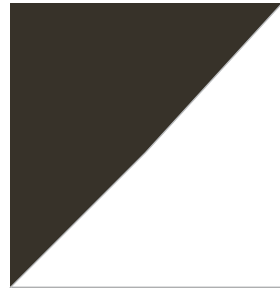
White



Almond



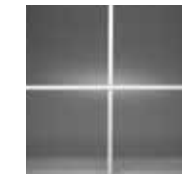
Desert Clay



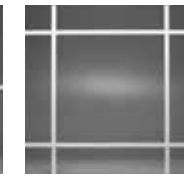
Bronze\*\*/ White

## Grid Options

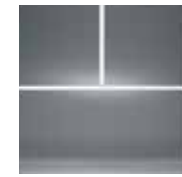
Decorative grids lend an added measure of style and dimension to your windows. All grids are enclosed within the insulated glass unit for easy cleaning. Select a grid profile and pattern to achieve your ideal finished look. Designer grids are also available for design flexibility.



5/8" Standard Colonial



5/8" Standard Prairie



5/8" Standard Craftsman\*\*



3/4" Contoured Colonial



3/4" Contoured Prairie



3/4" Contoured Craftsman\*\*



1" Contoured Colonial



1" Contoured Prairie



1" Contoured Craftsman\*\*



5/16" Designer Prairie



5/16" Designer Double Prairie



Obscure



Rain



Glue Chip

## Obscure Glass

Obscure glass styles offer privacy for bathrooms and other areas of your home without blocking the natural light.



## An Environmentally Friendly Choice

Conserving energy, reducing waste and recycling materials are just a few ways we can all work together to leave a smaller environmental footprint. As good neighbors to each other and the earth, today's homeowners are happily choosing green.

The home that protects you can also help protect the environment. As durable, eco-friendly products with a long service life, Synergy Windows and Patio Doors never need to be painted, and lessen the amount of paint, stain and other maintenance-related products from entering the waste stream or polluting the air with potentially harmful organic gases.

Exceptionally energy-smart and weathertight, Synergy Windows not only reduce fuel consumption needed to heat and cool homes, they also boast a longer service life than most other window materials, which all adds up to leaving a smaller environmental footprint on the earth. With a strong commitment to our environment, Synergy Windows, manufactured by AMI, are produced with optimal material use and waste, ensuring nearly all in-plant scrap is recycled to further reduce our environmental footprint.

PVC windows also are eco-friendly because resin is derived largely from common salt – a sustainable and abundant natural resource!<sup>2</sup>

<sup>2</sup> Source: A Clear View – Vinyl Windows and the Environment. American Architectural Manufacturers Association (AAMA) & The Vinyl Institute (VI).

Enjoy Greater Comfort  
and Lower Energy Bills

